

**Low Dose** **Excellent Image Quality** **Rapid Reconstruction**

# DENTRI α



# Efficient 3 in 1

## CBCT

### > Precise 3D Anatomical structures

- Accurate diagnosis for doctors
- Safe implant for patients

### > Significant reduction in X-ray dose



160x145 mm



160x80 mm

## Cephalometric image



Lateral

Frontal

SMV

Carpus

## Panoramic image



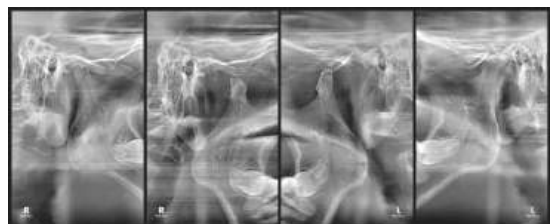
Panorama



Lateral

Frontal

Carpus



TMJ

# Features

## Artificial Intelligence

**HDX WILL algorithms** combine the technique of **mathematical computed tomography** with that of **deep learning**.

As a result of that, an exceptional CBCT image quality can be generated even at a **low dose x-ray** and the presence of **high-density materials**, which are known to reduce the quality of CBCT image.

The algorithms answer these previously concerned matters without losing valuable details and ultimately **go beyond the limit** of previous CBCT.

Mathematical  
Computed  
Tomography



Low Dose

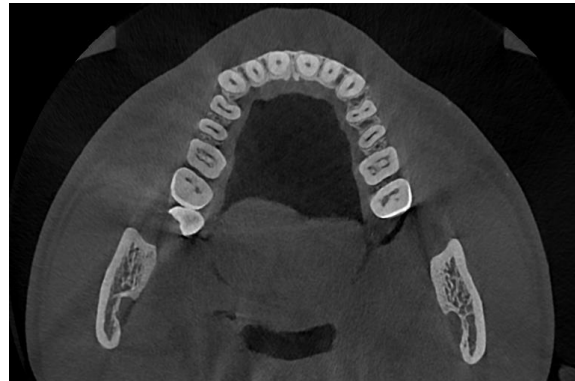
High Quality  
Image

Accurate MAR

## Ultra Fast Scan (UFS)

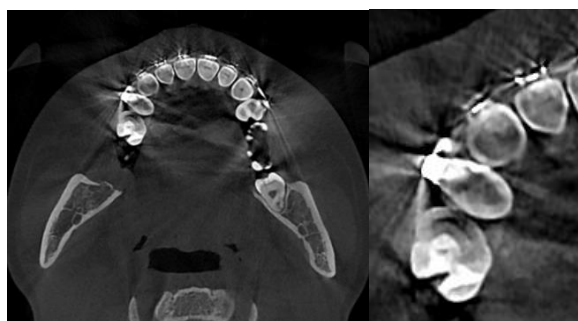


Ultra Fast Scan

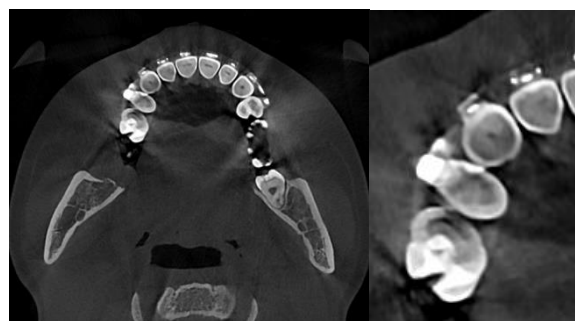


Normal Scan

## Metal Artifact Reduction (MAR)



Without MAR



With MAR

# Dental Programs

## Patient Management Software



Willmaster



Counseling Video

## Ceph Tracing



WillCeph

## CBCT Software



Will3D



Invivo6



OnDemand3D

# Specifications

X-ray beam		Cone beam	Patient Position	Standing		
Tube Voltage		60 kV-110 kV	Patient Alignment	Vertical Column: electric motion(Optional) Column: electric motion Temple Support: motion		
Focal Spot		0.5mm	Control Device	Alignment: Touch panel Exposure & Image acquisition: PC		
Voxel size(CT)		0.10, 0.15, 0.20, 0.25, 0.30	Dimensions (W×D×H)	DENTRI-α : 1201mm×1361mm× 2455mm DENTRI-C α : 2006mm×1361mm×2455mm DENTRI-S α : 1941mm×1361mm×2455mm (tolerance: ±5%)		
Detector Type	CT & Panorama	CMOS	Install	Standing		
	One shot type Cephalo	Direct(a-Se, TFT)				
Gray Scale	Scan type Cephalo	CMOS	System Weight (tolerance: ±10%)	DENTRI-α : 243 kg(Stitch mode) 233 kg(Non-Stitch mode)  DENTRI-C α : 270 kg(Stitch mode) 260 kg(Non-Stitch mode)  DENTRI-S α : 260 kg(Stitch mode) 250 kg(Non-Stitch mode)		
	CT & Panorama	14 bits				
	One shot type Cephalo	14 bits				
Scan Time	Scan type Cephalo	14 bits			Field of View(CT) (cm×cm) (Diameter×Height)	4×4 ~ Max. 16×14.5(Stitch) 4×4 ~ 16×8
	CT(Pulsed)	8 s or 24 s 16 s or 36 s(Stitch mode)				
	Panorama	14 s and less				
Reconstruction Time(With MAR)	One shot type Cephalo	0.5 s, 1.0 s, 1.5 s, 2.0 s	OS	Windows 10 64 bit		
	Scan type Cephalo	8.2 s and less	Memory	16G		

※ Specifications are subject to change without notice for improvement of product performance.



### H.Q. Sales Office

10F Taiwha Bldg, 29, Insadong 5-gil, Jongno-gu, Seoul, Korea Tel. +82 1544 5735 / Fax. +82 (0)2 2003 8497 [www.hdxwill.com](http://www.hdxwill.com)

### R&D Center

14F KCC Weltz Valley, 205, Gasan Digital 1-ro, Geumcheon-gu, Seoul, Korea

### Manufacturing Facility

#105, 106, 201, 202, 203, 204, 38, Osongsaengmyeong 4-ro, Osong-eup, Heungdeok-gu, Cheongju-si, Chungcheongbuk-do, 28161, Korea Tel. +82 (0)43 710 7318 / Fax. +82 (0)43 710 7312

CE  
0123

CNDA(T)10