



**Will Master**  
Image Capture and Patient Management Program with Counseling Video



**Will 3D**  
User-friendly 3D Image Analysis Program



**WillCeph Pro**  
Ceph Analysis Program for precise surgical plan

CN-EC(T)-18

Essential CBCT for Digital Dentistry

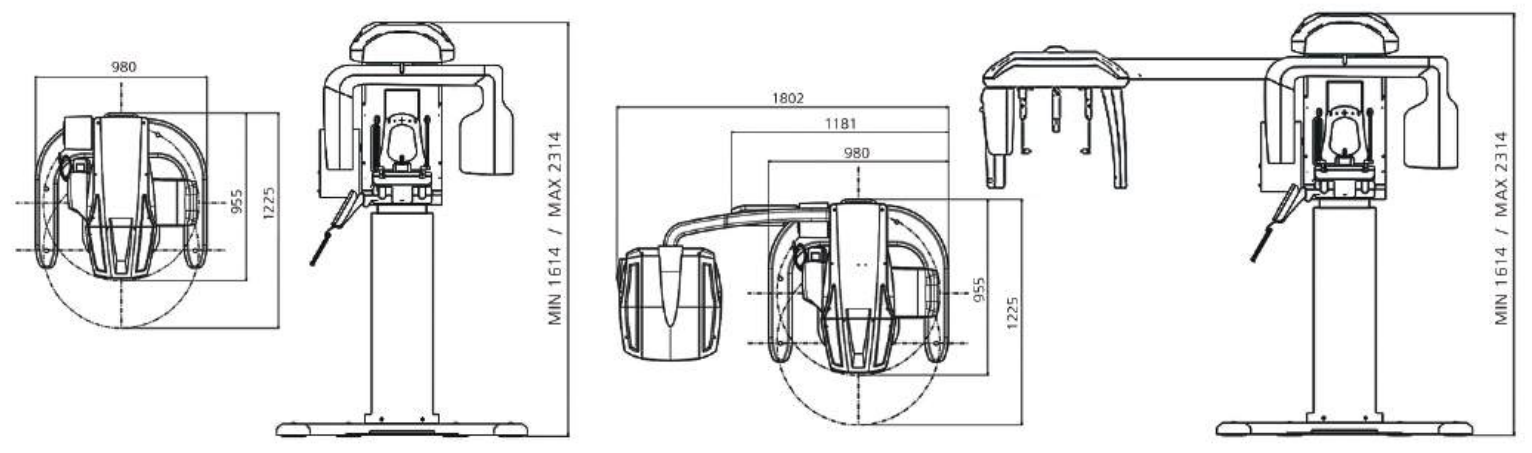
# eco-x

// Scan Mode

Model	Series	MODE			
		CBCT	Panorama	Model Scan	Cephalo(Scan)
eco-x	eco-x	●	●	●	
	eco-x-s	●	●	●	●
	eco-x ai	●	●	●	
	eco-x-s ai	●	●	●	●

// Specifications

Function	CBCT + Panorama + Cephalo(Scan) + Model Scan
Focal Spot	0.5mm
Scan Time	CBCT : 8s or 12s, 24s
	Panorama : 14s or less
	Cephalo(option) : 8s or less
FOV Size	10x8(Child), 12x10, 16x9
Voxel Size(CT)	0.2~0.3
Tube Voltage	60kV~90kV
Tube Current	4mA~10mA
Dimension(WxDxH)	eco-x, eco-x ai : 980mm x 1255mm x 2314mm
	eco-x-s, eco-x-s ai : 1802mm x 1225mm x 2314mm



FOV 16 / FOV 12



FOV16x9



FOV12x10

**Headquarter R&D Center**  
10F, 29, Insadong 5-gil, Jongno-gu, Seoul, Republic of Korea

**Osong Factory**  
#105, 106, 201, 202, 203, 204, 38, Osongsaengmyeong 4-ro, Osong-eup, Heungdeok-gu, Cheongju-si, Chungcheongbuk-do, Republic of Korea

**Purchase Inquiries**  
global@hdx.co.kr

**A/S Inquiries**  
support@iwillmed.com

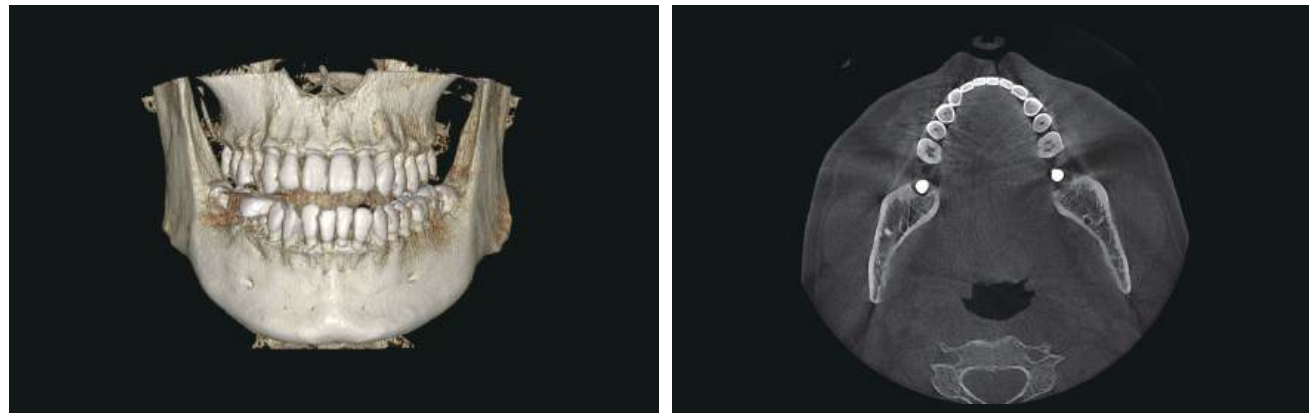
## 3D Skull & Axial

FULL ARCH CT image of 360° for impacted tooth diagnosis and implant guide

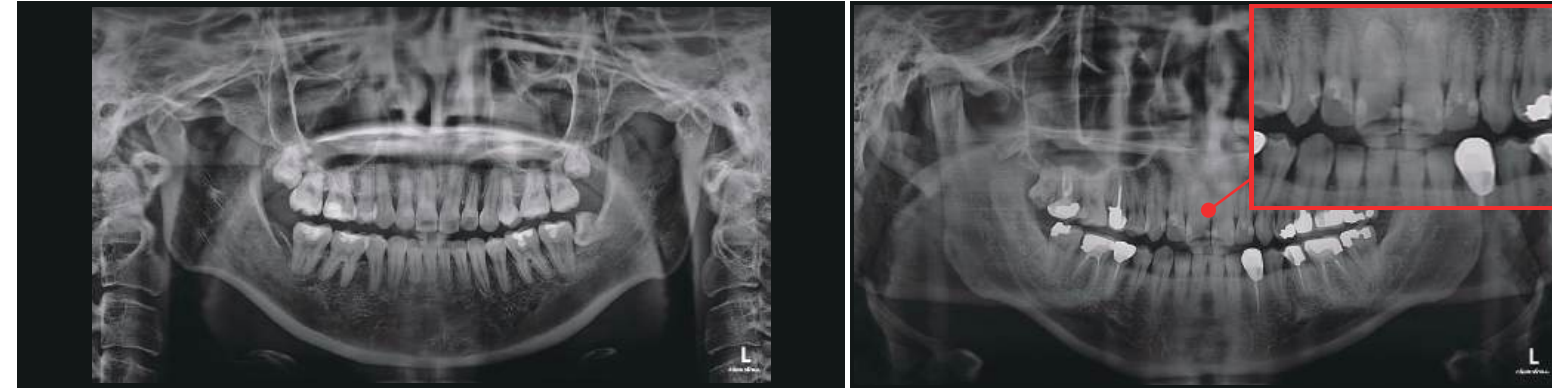
FOV 12X10



FOV 16 X 9



## Panoramic Image



### Auto Focus Panorama

minimizes image distortion based upon the shape of the dental arch

### Multi Layer

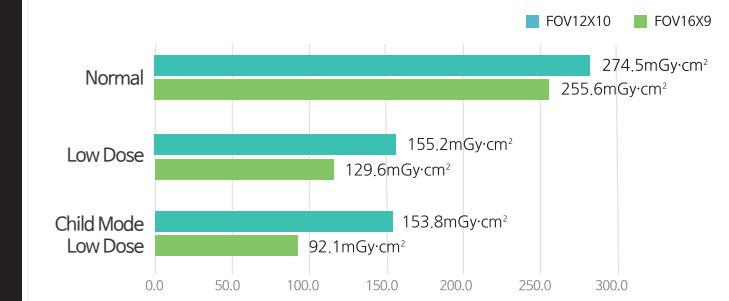
allows for clear images while correcting for mispositioning Almost 3D (2.5D)



### Bitewing

for proximal occlusal 2D image acquisition

### Radiation Dosage Comparison Chart (85kVp, 8mA)

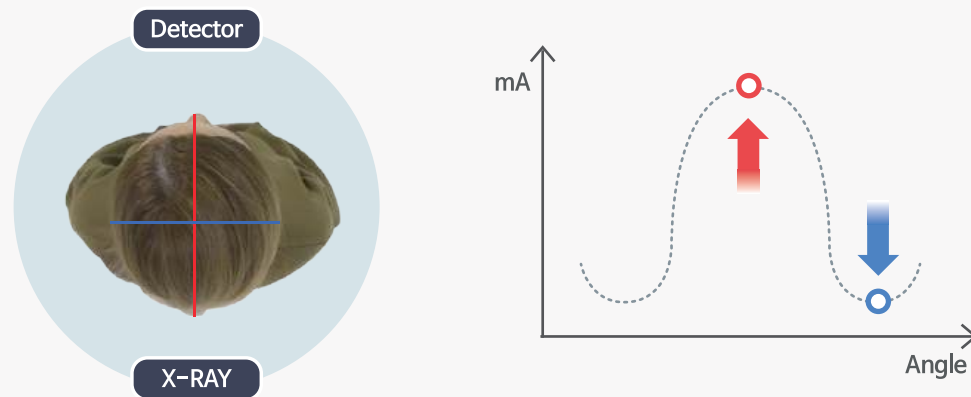


### Panorama Dosage Comparison

minimized radiation exposure scan mode available

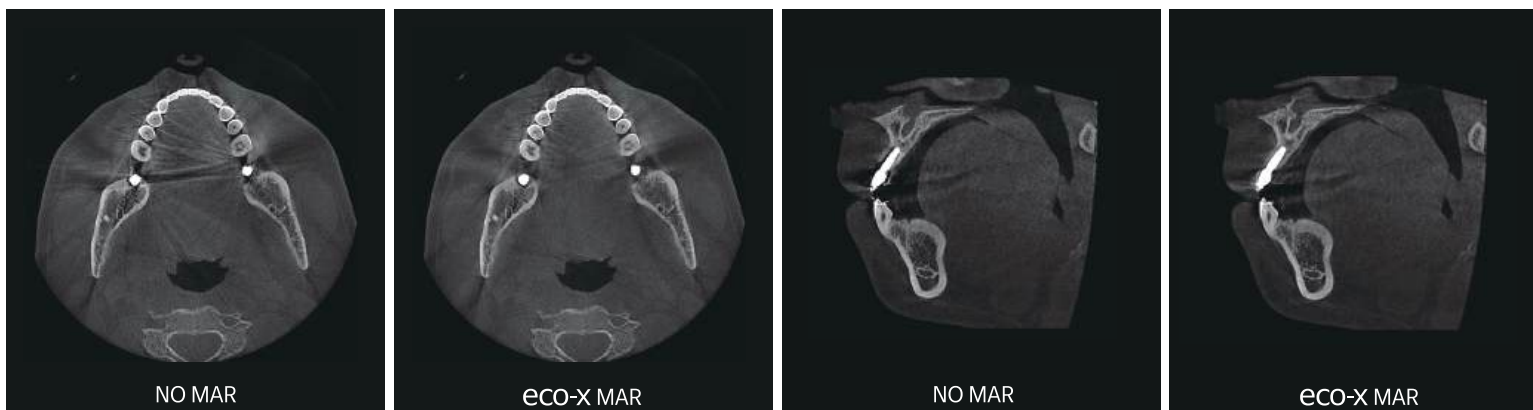
## Low Dose X-ray CBCT

AEC (Auto Exposure Control) Function provides superior imaging with dosage less than a panoramic scan



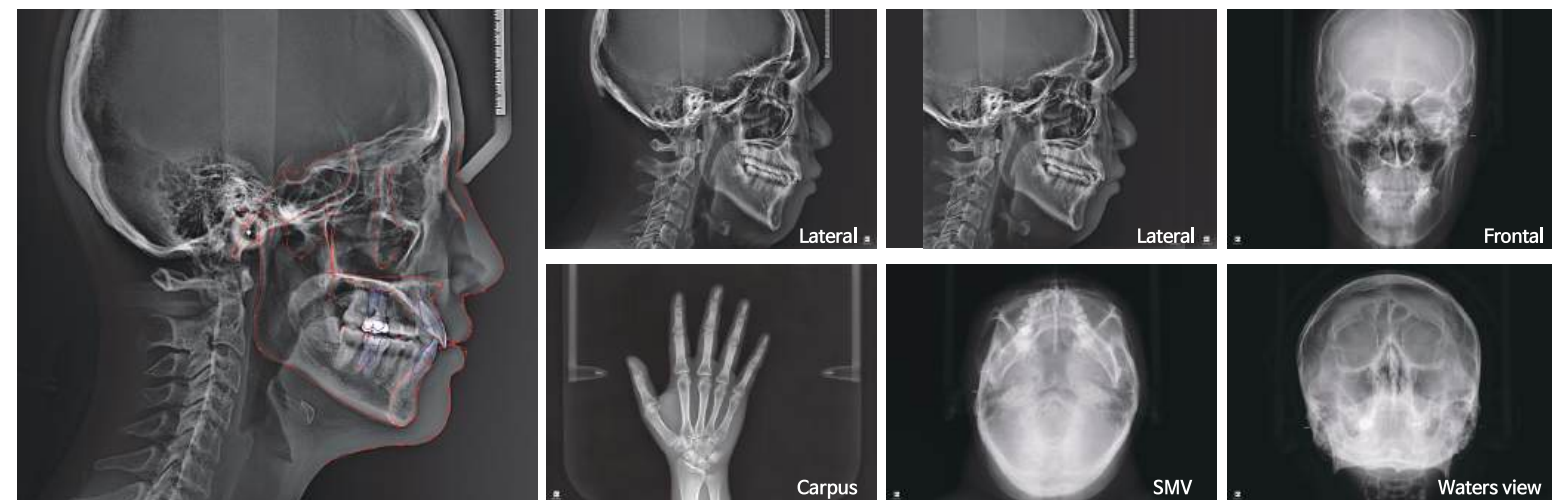
## High Quality MAR

From analyzing anatomical structures to pathological diagnosis, clearly visualizes with exceptional low dose exposure



## Cephalometric Image

Various Capture Mode



## Model Scan

STL file is extracted simultaneously with CBCT scan of impression or model

