

# Compressor product overview

## Suction system product overview



\*Integration of non-network-capable devices possible through the Connect Box.



**Dry suction systems**

**Wet suction systems**

	V 300 S	V 600	V 900 S	V 1200 S	V 2400	Tyscor V 1 Plus	Tyscor V 2	Tyscor V 2 Plus	Tyscor V 4	VS 300 S	VS 600	VS 900 S	VS 1200 S	Tyscor VS 1 Plus	Tyscor VS 2	Tyscor VS 2 Plus	Tyscor VS 4	VSA 300 S	VSA 600	VSA 900	VSA 1200	Tyscor VSA 1 Plus	Tyscor VSA 2	Tyscor VSA 4
<b>Number of users</b>	1	2	3	4	8	1	2	2	4	1	2	3	4	1	2	2	4	1	2	3	4	1	2	4
<b>Size</b>	H 38 cm B 31 cm T 32 cm	H 48 cm B 41 cm T 39 cm	H 52 cm B 41 cm T 43 cm	H 52 cm B 41 cm T 43 cm	H 115 cm B 80 cm T 48 cm	H 34 cm B 35,5 cm T 45,5 cm	H 34 cm B 35,5 cm T 45,5 cm	H 54 cm B 45 cm T 62 cm	H 54 cm B 45 cm T 62 cm	H 38 cm B 31 cm T 32 cm	H 48 cm B 41 cm T 39 cm	H 52 cm B 41 cm T 43 cm	H 52 cm B 41 cm T 43 cm	H 32 cm B 35,5 cm T 45,5 cm	H 32 cm B 35,5 cm T 45,5 cm	H 51 cm B 45 cm T 69 cm	H 51 cm B 45 cm T 69 cm	H 47 cm B 31 cm T 32 cm	H 92 cm B 52 cm T 48 cm	H 95 cm B 62 cm T 61 cm	H 95 cm B 62 cm T 61 cm	H 77 cm B 52 cm T 48 cm	H 77 cm B 52 cm T 48 cm	H 96 cm B 74 cm T 56 cm
<b>Noise level</b>	63 dB(A)	65 dB(A)	65 dB(A)	65 dB(A)	70 dB(A)	55 dB(A)	57 dB(A)	62 dB(A)	62 dB(A)	63 dB(A)	65 dB(A)	65 dB(A)	65 dB(A)	53 dB(A)	55 dB(A)	61 / 64 dB(A)	61 / 64 dB(A)	63 dB(A)	65 dB(A)	65 dB(A)	66 dB(A)	ca. 53 dB(A)	ca. 53 dB(A)	ca. 61 dB(A)
<b>Max. fluid flow rate</b>										4 l/min	10 l/min	16 l/min	24 l/min	8 l/min	8 l/min	24 l/min	20 l/min	4 l/min	10 l/min	16 l/min	24 l/min	10 l/min	10 l/min	20 l/min
<b>Weight</b>	13 kg	21 kg	26,5 kg	26,5 kg	68 kg	9 kg	9 kg	19 kg	19 kg	13,25 kg	22 kg	28,75 kg	27,5 kg	11 kg	11 kg	24 kg	24 kg	16 kg	51 kg	59 kg	59 kg	40 kg	40 kg	55 kg
<b>230 V (1~)</b>	7119-01/002	7127-01/002	7131-01/002			7182100200	7177-01	7188200200	7188100200	7122-01/002	7128-01/002	7134-01/002		7182100100	7186-01	7188200100	7188100100	7125-01/002	7128 500001	7134 500001		7182 500001	7186 500001	7188 500001
<b>230 V (3~)</b>				7136-02/003							7128-02/003		7138-02/003											
<b>400 V (3~)</b>		7127-02/002	7131-02/002	7136-02/002	7137-02						7128-02/002	7134-02/002	7138-02/002							7134 500002	7138 500001			

# Accessories



**7117-95**

CA 2 amalgam separator  
2 users



**7182100012**

Kit to upgrade Tyscor V/VS  
1 to Tyscor V/VS 2



**7130-190-00**

Wall bracket for V/VS 600,  
V/VS 900 S, V/VS 1200 S  
and Tyscor V/VS 1/2



**7805-100-50**

CA4 amalgam separator  
4 users



**0730-991-00**

Noise reducer for V/VS 600,  
V/VS 900 S, V/VS 1200 S  
and Tyscor V/VS



**7130-191-00**

Floor brackets for V/VS 600,  
V/VS 900 S, V/VS 1200 S  
and Tyscor V/VS 1/2



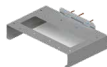
**7130-195-50**

Floor brackets/wall console for  
VS 600/VS 900 S/VS 1200 S  
and Tyscor V/VS 4



**7120-143-00**

Exhaust air bacteria filter for  
VS 250 S, V/VS/VSA 300 S,  
Variosuc and PTS



**7188100015**

Wall bracket  
for Tyscor V/VS 4  
or two Tyscor V/VS 2



**7122200000**

Noise reduction hood  
for V/VS/VSA 300 S



**7120100000**

Filter housing incl. bacteria filter  
for integration in exhaust air line



**7188100017**

Floor brackets  
Tyscor V/VS 4



**7131-991-00**

Noise reduction hood for  
V/VS 600/900 S/1200 S



**0705-991-50**

Exhaust air bacteria filter  
for V/VS 600 - V/VS 1200 S,  
V 2400, Tyscor V/VS, PTS 200  
and clinic suction systems



**7130-991-51**

Pressure equalisation tank  
for CA 4



**7186100030**

Noise reduction hood  
Tyscor V/VS 1/2



**7188100075**

Upgrade Kit  
V/VS 2 Plus to V/VS 4



\*Integration of non-network-capable devices possible through the Connect Box.



	Tornado 1	Tornado 1	Tornado 2	Tornado 2	Tornado 2+	Tornado 4	Primo	Duo	Trio	Quattro	Duo Tandem	Duo Tandem	Quattro Tandem	Quattro Tandem	Quattro P20
<b>Special features</b>		Sound-proofing		Sound-proofing	Sound-proofing	2 units					1 unit	2 units	1 unit	2 units	4 units
<b>Number of users</b>	1	1	2	2	2	4	1	2	3	4	2	4	4	8	16
<b>Frequency (Hz)</b>	50/60	50/60	50/60	50/60	50/60	50/60	50/60	50/60	50	50/60	50/60	50/60	50/60	50/60	50/60
<b>Pressure range (bar)</b>	6-7.8	6-7.8	6-7.8	6-7.8	5.5-7.5	6-7.8	6-7.8	6-7.8	6-7.8	6-7.8	6-7.8	6-7.8	5.5-7.5	5.5-7.5	5.5-7.5
<b>Size</b>	H 65 cm B 49 cm T 47 cm	H 84 cm B 63 cm T 60 cm	H 65 cm B 49 cm T 47 cm	H 84 cm B 63 cm T 60 cm	H 84 cm B 63 cm T 60 cm	H 72 cm B 76 cm T 59 cm	H 69 cm B 49 cm T 47 cm	H 69 cm B 49 cm T 47 cm	H 76 cm B 74 cm T 52 cm	H 76 cm B 74 cm T 52 cm	H 76 cm B 75 cm T 52 cm	H 76 cm B 79 cm T 52 cm	H 82 cm B 102 cm T 62 cm	H 82 cm B 102 cm T 62 cm	H 114 cm B 115 cm T 77 cm
<b>Noise level dB(A)</b>	64	-	68	-	-	70	65	66	67	69	66	69	69	72	75
<b>[cabinet] dB(A)</b>	-	[58]	-	[59]	[56]	-	[49]	[51]	[49]	[53]	[51]	[51]	-	-	-
<b>Flow rate at 5 bar*(l/min)</b>	67/77	60/70	124/140	110/126	110/126	235/270	61/71	125/145	181	258/293	125/145	253/292	258/293	516/586	1032/1172
<b>Tank volume (l)</b>	20	20	20	20	20	50	20	20	50	50	50	50	90	90	90
<b>Weight (kg)</b>	37	49	43	57	58	90	45	50	80	85	70	100	120	170	300
<b>230 V (1~)</b>	5182-01	5186-01	5282-01	5286-01	5286100036	4282-01	5152-01	5252-01	5352-01		4152100008	4252100027			
<b>230 V (3~)</b>															4682-52
<b>400 V (3~)</b>								5252-51		5452-51	4152-54	4252-54	4642-54	4682-54	4852-54

\*Measured without dry air

# Accessories



**5150-500-00**

Soundproof cabinet, small  
Primo, Duo, Tornado  
H 95 x W 65 x D 63 cm



**1650100172**

Bacteria filter  
for dry air unit



**5180-982-00**

Air intake filter  
for Tornado 1 and 2



**4251-500-00**

Soundproof cabinet, large  
Duo Tandem, Trio, Quattro  
H 112 x W 96 x D 70 cm



**1650-101-00**

Sinter filter  
for dry air unit



**1610-121-00**

Fine filter  
for dry air unit



**0832-982-00**

Air intake filter for Primo, Duo, Trio, Quattro  
compressors and Power Towers  
110/160/210/200

DÜRR DENTAL SE  
Höpfigheimer Str. 17  
74321 Bietigheim-Bissingen  
Germany  
[www.duerrdental.com](http://www.duerrdental.com)  
[info@duerrdental.com](mailto:info@duerrdental.com)

 **DÜRR  
DENTAL**  
THE BEST, BY DESIGN