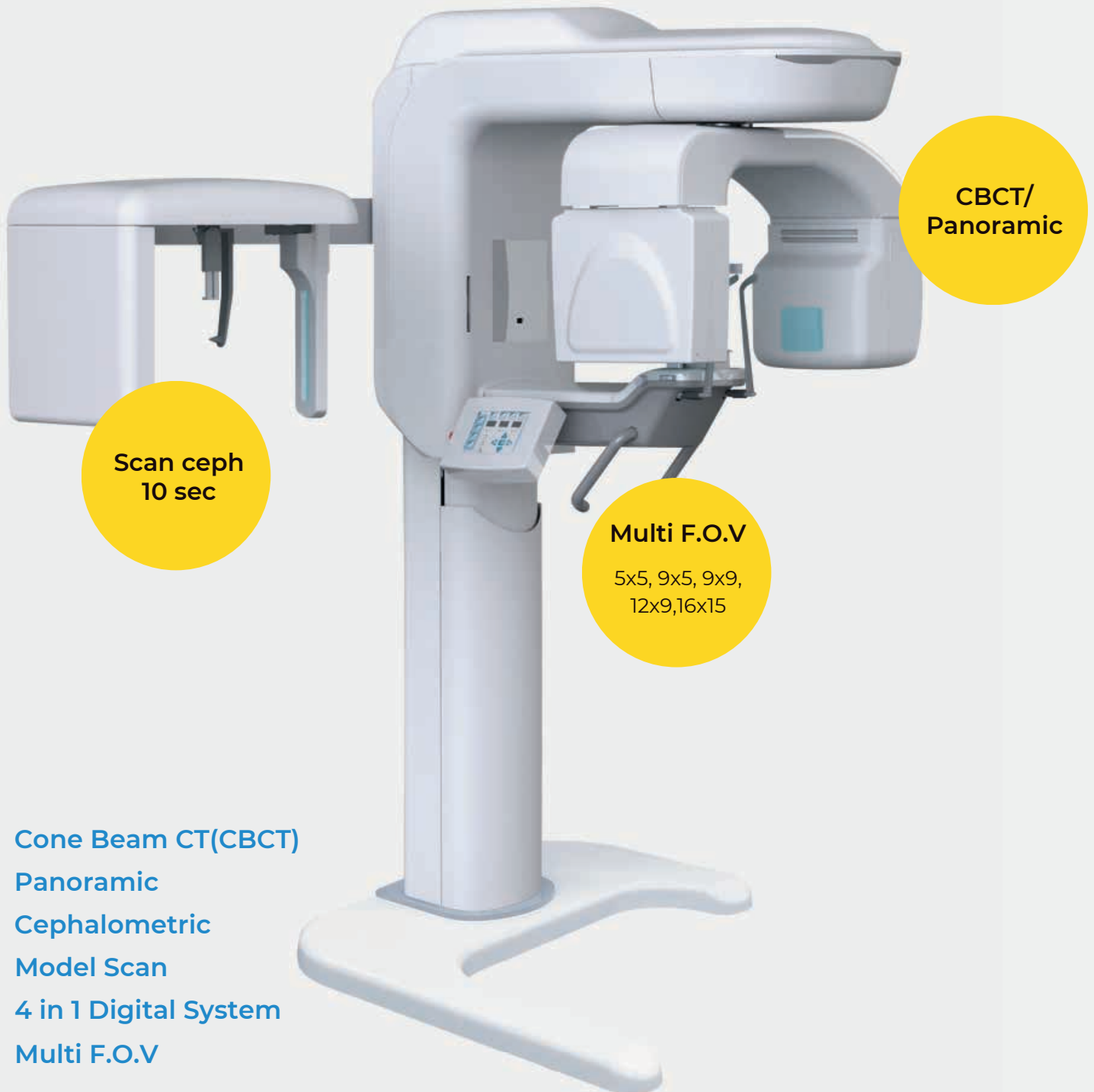


Point 3D Combi 500 Stitching

4 in 1 Digital System Multi FOV (16X15)



Point 3D Combi 500S



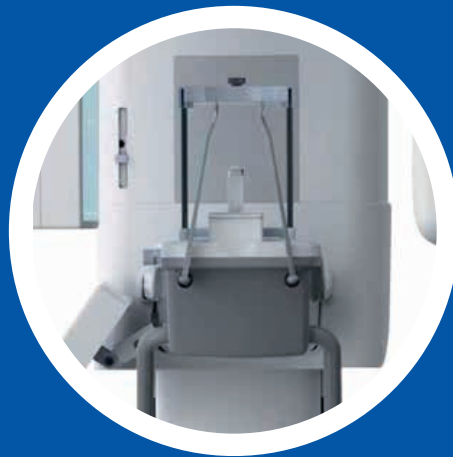
Cone Beam CT(CBCT)
Panoramic
Cephalometric
Model Scan
4 in 1 Digital System
Multi F.O.V

Point 3D Combi 500S

- 4 types of Multi FOV suitable for diagnostic purposes
- Lower Radiation Dose
- Comfortable patient positioning
- 21x17 cephalo image size (One shot FPD)
- Wheelchair accessible



Handle for maintaining a stable posture



Mirror for accurate shooting posture


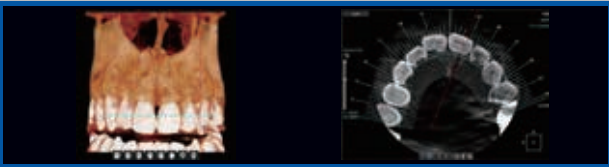

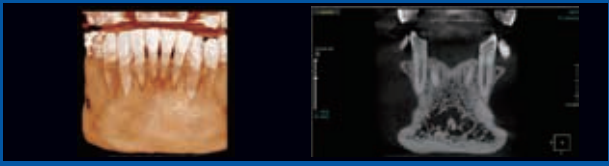



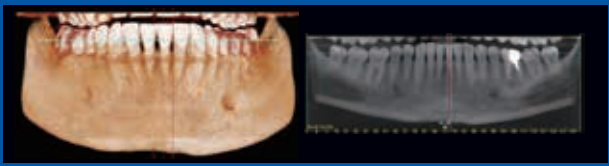



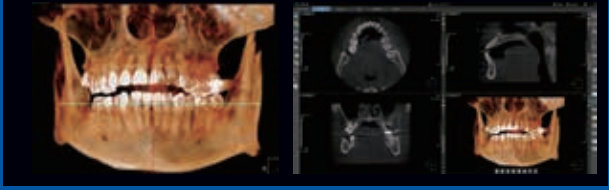

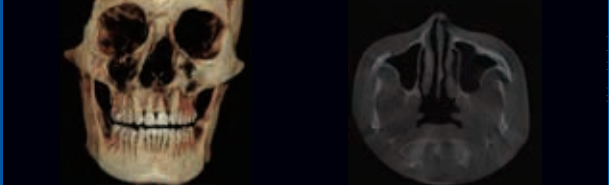


Wheelchairs accessible

Multi-FOV Selection / 500 Stitching

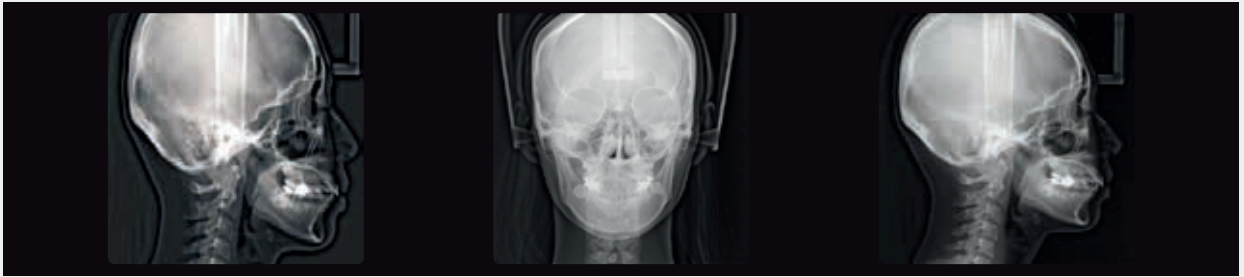
Each FOV size provides the most suitable work field depends on desired diagnosis

Multi F.O.V(Field of View)

FOV	REGION	IMAGES	APPLICATION
5x5		<p>Maxillary</p> 	<ul style="list-style-type: none"> • Implant placement • Complex tooth ambush • Care for all cases requiring high resolution (75um) • Endodontic treatment
		<p>Mandibular</p> 	
9x5		<p>Maxillary</p> 	<ul style="list-style-type: none"> • Implant placement • Complex tooth ambush • Metal Artifact Reduction
		<p>Mandibular</p> 	
9x9			<ul style="list-style-type: none"> • Implant placement • Complex tooth ambush • Metal Artifact Reduction • TMJ Diagnosis
12x9			<ul style="list-style-type: none"> • Implant placement • Complex tooth ambush • Single temporomandibular joint diagnosis • Care for all cases requiring high resolution (256 um)
16x15			<ul style="list-style-type: none"> • Implant placement • Orthodontics • Facial reconstruction • Sinus & Airway • Several cases related to the maxillary and mandible • Stitching image (500 μm)

Cephalometric Image Quality

High resolution Cephalometric Technology



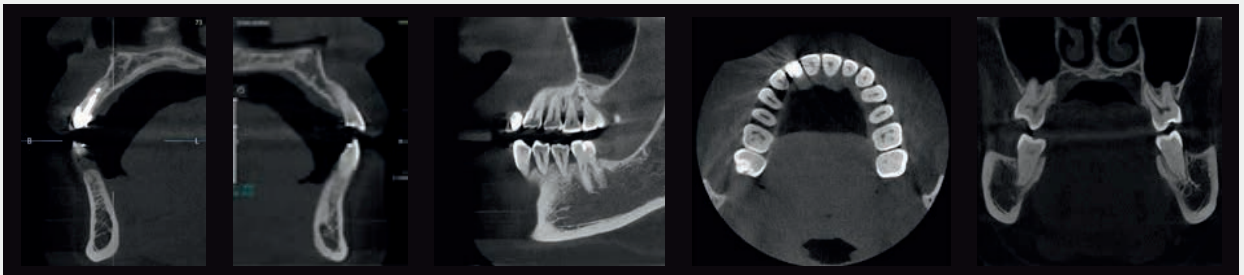
Scan Type [Lateral]

One-Shot Type [AP/PA]

One-Shot Type [Lateral]

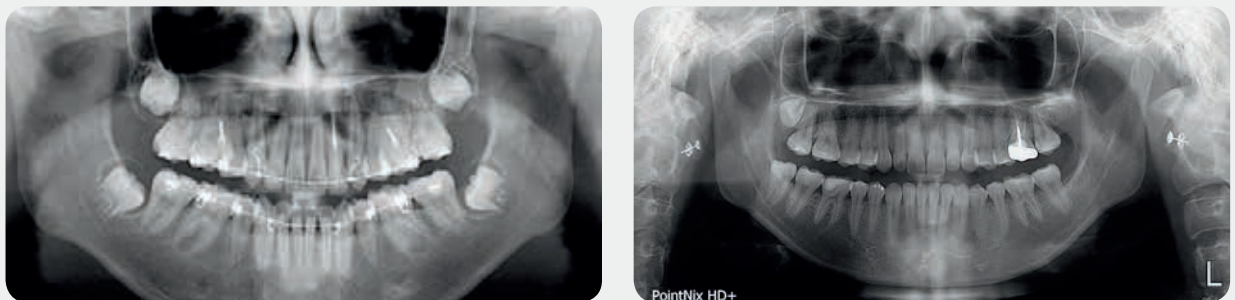
MAR (Metal Artifact Reduction)

Provides images optimized for diagnosis by minimal metal artifacts improved image reflection through interactive algorithm for 3D reconstruction.



A.M.D (Automatic Management Dosage) solution

High resolution Panoramic Technology



	Panoramic Modality	Cephalometric Modality	3D Modality
Sensor technology	Scan ceph: CMOS Direct Deposit csi, DRZ Plus	CdTe, CMOS Direct Deposit Csl, DRZ Plus Csl	Direct Deposit csi, DRZ Plus
Image field (Pixel matrix)	1500 x 68 (Pixel matrix)	SScan ceph 2200 x 48 (Pixel matrix) One shot ceph 2176 x 1792 (Pixel matrix) 1900 x 2304 (Pixel matrix)	Multi F.O.V (5x5,9x5,9x9,12x9,16x15)
Gray scale	16bits	16bits	16bits
Radiological exam options	Full panoramic, segmented Panoramic macillary sinus, TMJ	Lateral, Frontal AP or PA, carpus (optional)	Full upper or lower jaw -full, Upper or lower molar-Occlusion-Teeth
Exposure time	Pano / TMJ 17s / 11s	(Scan) 10s / (One shot) 0.8	19s

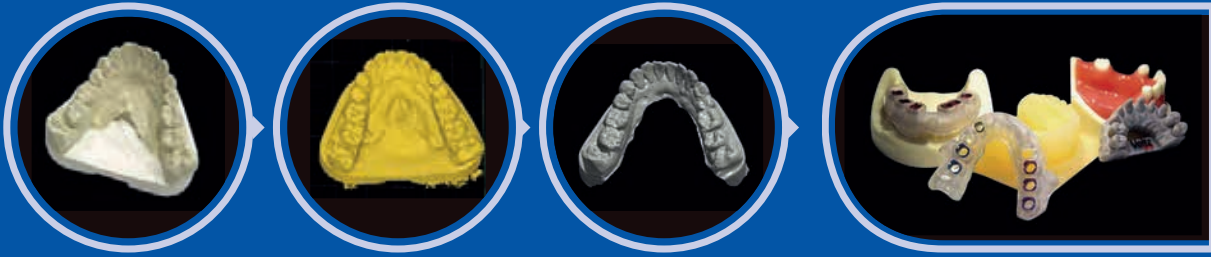


Technical Specifications

Input voltage	220v 50/60Hz, 230v 50Hz
Weight	190 kg
Unit dimension	2300mm × 1420mm × 1920mm
X-ray Tube	D-054SB (Focal Spot 0.5mm)
kVp / mA	50~90kVp / 4~16mA
Frequency ranges	40~150kHz

Object Scan(Digital Impression)

Scan Your Model/Impression and convert the Dicom to STL file



A function that shows anatomical information such as Bone and Nerve by merging patient CT image and data through model scanning.



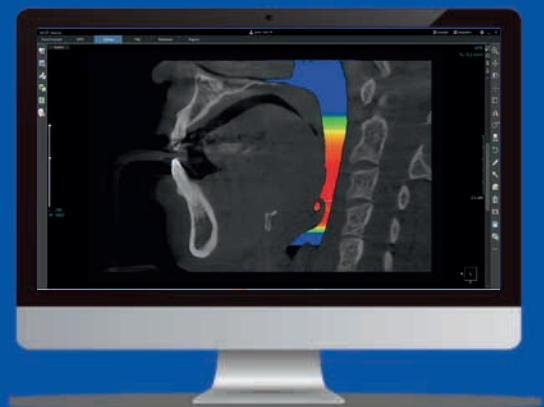
- Able to check a soft tissue and CT anatomical informations at the same time.
- Possible to virtualize prosthesis positioning and implantation.
- Increases the rate of consent to treatment through visualized treatment plan consultation.
- Eligible to scan both silicone impression and gypsum.

Point Airway solution

It visualizes the volume of Airway by color and provides accurate information for clinical diagnosis.

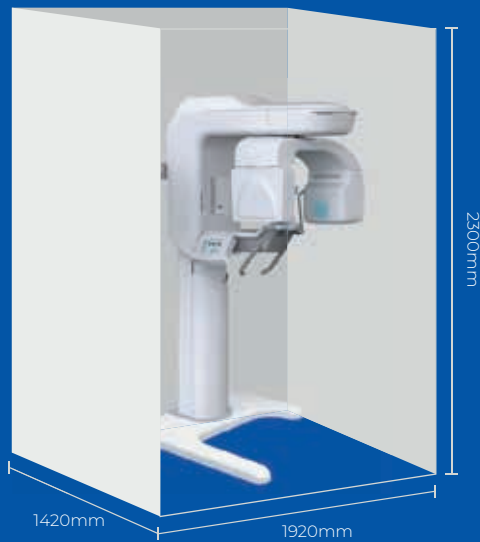
Through this, intuitive consultation with the patient is possible, which helps to increase the consent rate for treatment.

- Quick airway analysis by only 2 clicks.
- Intuitive analysis of airway shape and volume in colors.
- Real-time analysis in Axial : The total volume of the airway, the minimum area, and the area in the AP&RL direction.
- Field of application : general correction / oral and maxillofacial surgery / snoring / sleep apnea



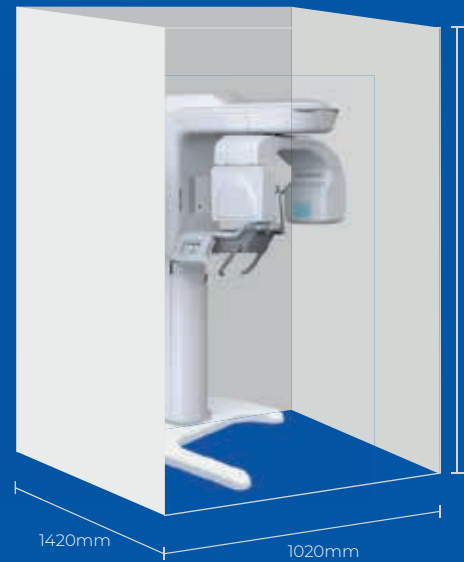
[Dimension]

Point 3D Combi 500 Series (3D)



Point 3D Combi 500S (CT+Pano+Ceph)
Point 3D Combi 500 (Pano+Ceph)

· Size **2,300mm × 1,420mm × 1,920mm**
· Weight **190kg**



Point 3D Combi 500 (CT+Pano)
Point 3D Combi 500 (Pano)

· Size **2,300mm × 1,420mm × 1,020mm**
· Weight **150kg**



HQ Office : 25F, C dong, 43, Iljik-ro, Gwangmyeong-si, Gyeonggi-do, 14353, Republic of Korea
Factory : 8F, C dong, 43, Iljik-ro, Gwangmyeong-si, Gyeonggi-do, 14353, Republic of Korea
TEL : +82-2-6480-0111 FAX : +82-2-839-4972 E-mail : info@pointnix.com
Web : www.pointimplant.com, www.hallim.com