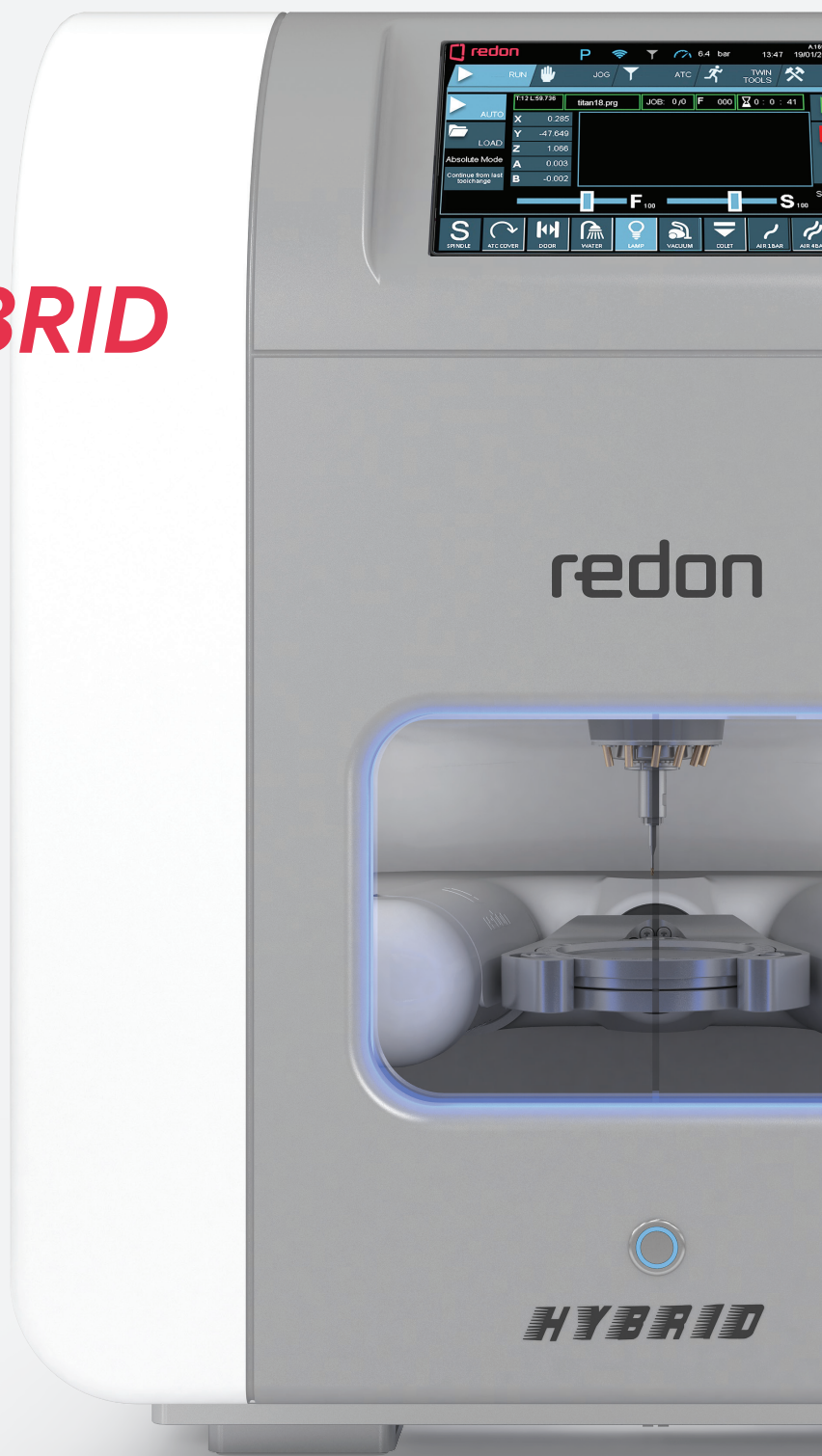


# **REDON HYBRID**

## TECHNICAL DATASHEET



# Holder Types



Standart Holder



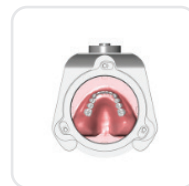
Premill Holder



Glass Ceramic Holder



Glass Ceramic / Premill Holder



Denture Holder

# Applications



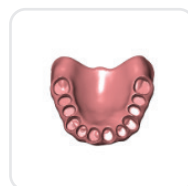
Abutments



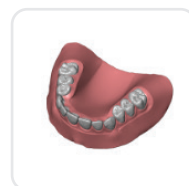
Screw Retantion Bridge



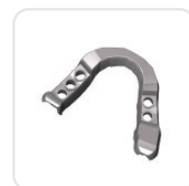
Crown Bridge



Denture - Type 1



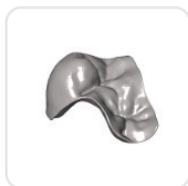
Denture - Type 2



Surgical Guide



Hybrid Abutment



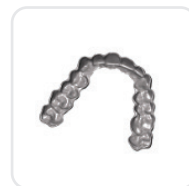
Inlay, Onlay and Veners



Model Casting



Model



Splint



Telescope



Telescope Abutment

# Material Types

Titanium

CoCr

Premill

Zirconia

Glass - Ceramic

Composite

PMMA

Alumina

Wax

Fiber

Peek

# Technical Specifications **Hybrid**

AXIS MOTOR TECHNOLOGY

**Dijital AC Servo**

SPINDLE SPEED

**60.000**RPM / STD

SPINDLE POWER

**1.2kW** / STD

NUMBER OF AXES

**5 Axes**

MAX. SLOPE ANGLE OF A AND B AXIS

**±30 Degrees**

MAX TOOL SHAFT DIAMETER

**3 / 4 / 6mm**

ATC CAPACITY

**12**

DRY AND WET MILLING

**Yes**

REFERENCING MILLING REQUIREMENT

**No**

VOLTAGE / FREQUENCY

**110v - 230v / 50-60Hz**

PRESSURIZED AIR REQUIREMENT (L/Min.)

**100 L / Min.**

AIR PRESSURE (BAR)

**6**

CAM SOFTWARE

**Open System**

DEVICE DIMENSIONS

**560 x 630 x 650 mm**

STANDARTS

Glass Ceramic / Premill Holder, Disc Holder, Zircon Bur Set, Allen Set, Spindle Cleaning Kit, Air Hose, Air Gun, Water Hose, Water Tank  
Cutting Oil, Cleaning Brush, Pump, Adapter, Ethernet Cable, Fuses, Usb

OPTIONS

Table, Vacuum Unit, Sinter Furnace, Scanner